



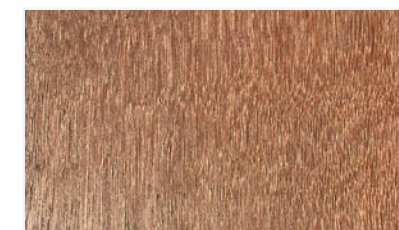
Stake bodies are available for agricultural and commercial applications.

## FEATURES

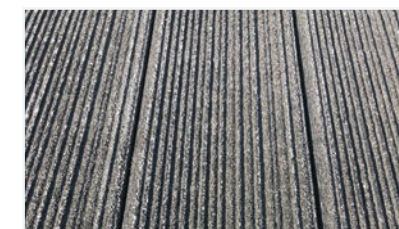
- All extrusions are proprietary to Future Line Manufacturing, and T6061 aluminum alloy used as standard to deliver 100% corrosion resistance, increased strength, durability and longevity
- 8'6" to 26' body length and 96" and 102" body widths
- 6 x 4" extruded rub rail\*
- Flooring: treated pine, apitong, Rumber®, or 1 3/4" extruded aluminum with smooth bottom
- Exclusive EX2 long sill rubber cushion insert adds frame protection while reducing vibration and noise\*
- Light holes and LED lighting that meets FMVSS-108 requirements
- 2 x 4" internal stake pockets on 24" centers
- 4" extruded aluminum crossmembers on 12" centers



EXTRUDED



APITONG



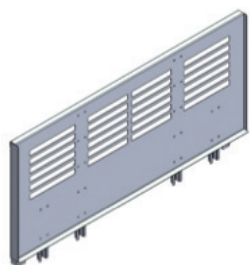
RUMBER®

## BENEFITS

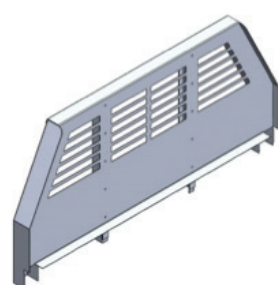
- Lights are protected from impact and weather due to recessed rubber mount
- All aluminum; no steel or hybrid
- Durable extruded long sill system\*
- Exclusive EX2 rubber cushion provides vibration insulation resulting in a quieter ride and reduced wear and tear\*
- Quick mount design for fast and easy installation
- Fuel savings from bodies that weigh 50% less than steel

## STAKE BODY BULKHEADS

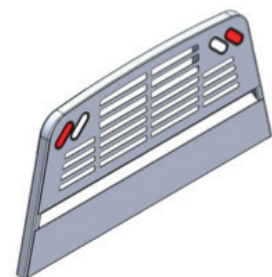
- NEW slotted bulkhead design increases visibility by up to 35%



**STRAIGHT BULKHEAD**  
(available in drop-in or weld-on)



**TAPERED BULKHEAD**  
(available in drop-in or weld-on)



**RANCHER BULKHEAD**



UNDERBODY WITH EX2

### HEAVY-DUTY STAKE BODIES

DIMENSIONS	WOOD	1 3/4" EXTRUDED ALUMINUM (with traction)	1 3/4" EXTRUDED ALUMINUM (smooth)	APITONG
9' 4" X 96"	AHDW0996612	AHDE0996612*	AHDS0996612*	AHDA0996612
11' 4" X 96"	AHDW1196612	AHDE1196612*	AHDS1196612*	AHDA1196612
12' 4" X 96"	AHDW1296612	AHDE1296612*	AHDS1296612*	AHDA1296612
14' 4" X 96"	AHDW1496612	AHDE1496612	AHDS1496612	AHDA1496612
16' 4" X 96"	AHDW1696612	AHDE1696612	AHDS1696612	AHDA1696612
18' 4" X 96"	AHDW1896812	AHDE1896812	AHDS1896812	AHDA1896812
20' 4" X 96"	AHDW2096812	AHDE2096812	AHDS2096812	AHDA2096812
22' 4" X 96"	AHDW2296812	AHDE2296812	AHDS2296812	AHDA2296812
24' 4" X 96"	AHDW2496812	AHDE2496812	AHDS2496812	AHDA2496812
26' 4" X 96"	AHDW2696812	AHDE2696812	AHDS2696812	AHDA2696812

\* indicates crossmemberless option. Ask for information on Rumber® flooring. See price list for 102" wide model numbers.

\*features exclusive to Future Line