



TRUCK EQUIPMENT
MANUFACTURING

BUILT ^{TO} CONQUER



ECONOMY RANCHER

SEE PAGE 11

550 60TH AVE. SW, CEDAR RAPIDS, IOWA 52404

CALL: (319) 730-3800

TUFFTRUCKBODIES.COM



(Left to Right) Brett Wilson, CO-Owner/CEO & Jesse Newman, Owner/President of Tuff Truck



BUILT TO LAST: THE TUFF TRUCK LEGACY

WHEN THE JOBS ARE PILING UP, PRESSURE IS HIGH, AND TALENT ONLY GETS YOU SO FAR: IT'S TIME TO GET TUFF!

Efficiency is the name of the game, and the bottom line is more important than ever. To get the job done right, and get it done fast, you need more than equipment. You need problems solved, and you need them solved yesterday.

From two cousins discovering their passion, to a team thirty strong and growing, the vision's been the same: truck solutions specifically engineered to solve the problems you face, every day. You dream it — we build it. It's a vision that fuels our desire to innovate, burning brighter every time our product empowers you to save time, save money, and simplify your work day. At the heart of Tuff Truck Bodies is a commitment to industry-leading craftsmanship, and lasting relationships built on trust and mutual benefit. Solving the problems you face, every day. It's what gets us out of bed in the morning.

Nearly 30 years and a nationwide network of sixty dealers later, Tuff Truck Bodies has grown from humble beginnings into an industry-leading innovator. We solve your truck body into an industry-leading innovator. We solve your truck body challenges at the manufacturing stage, rather than during installation, eliminating the need for time-consuming and costly modifications. Designed without limits and built to endure, our deliberate approach to providing resilient, versatile products has been achieved through the hard work of our accomplished in-house engineering and design teams.

Leveraging advanced software, advanced CNC machines and skilled welders to create tailored solutions from the start, our process ensures precision and efficiency in every project. And taking our lessons from ol' grandad - we review our estimates carefully, stick to our quotes and stay on schedule, empowering us to deliver the personalized equipment you need faster and more affordably.

Constantly evolving to meet the needs of our customers, our commitment is offering complete customization, a simple buying process and fast turnaround times. We think it's what sets us apart from the rest. Whether you're a local business, a municipality, or part of a national fleet, optimize your operations and get ahead of the competition with versatile equipment that's built lighter, built stronger, and built to your needs. **Tuff Truck Bodies: BUILT TO CONQUER.**



BUILT TOUGHER, SMARTER, FASTER



LOCALLY OWNED

Based in Eastern
Iowa Since 1995



NATIONALLY RECOGNIZED

National Truck Equipment
Association Member



GUARANTEED QUALITY

Warranties on All
Our Products

At Tuff Truck Bodies, we don't just build truck bodies—we build trust. Our dedication to quality, innovation, and customer satisfaction drives every decision we make. From the first sketch to the final weld, we're committed to delivering solutions that not only meet your needs but exceed your expectations. With a relentless focus on efficiency and performance, we continue to push the boundaries of what's possible, ensuring that every product we create is as durable as the people who rely on it. When you choose Tuff Truck Bodies, you're not just investing in equipment—you're investing in reliability, longevity, and a partnership that stands the test of time.

TABLE OF CONTENTS

FEATURED PRODUCTS

GOOSENECK BODIES

Standard Rancher07

Skirted Rancher09

FDS Rancher11

Economy Rancher13

PLATFORM BODIES

Platform Bodies16

LANDSCAPER BODIES

Landscaper Bodies19

CONTRACTOR BODIES

Contractor Bodies22

DUMP BODIES

2-4 Yard Dump Bodies25

Steel Class Dump Bodies27

SERVICE BODIES

Service Bodies29

HOIST BODIES

Hoist Bodies31



GOOSENECK BODIES



PLATFORM BODIES



LANDSCAPER BODIES



CONTRACTOR BODIES



DUMP BODIES



SERVICE BODIES



HOIST BODIES





GOOSENECK BODIES

The Tuff Truck Rancher Series offers durable, corrosion-resistant aluminum truck beds built for top performance. With options like the Standard, Skirted, and Economy Rancher, each model delivers strength, fuel efficiency, and versatility for any job.

STANDARD RANCHER

OUR ALL-ALUMINUM CONSTRUCTION WITH EXCLUSIVE CORROSION-RESISTANT EXTRUSIONS OUTPERFORMS THE COMPETITION TO DELIVER BETTER PERFORMANCE.



ALL EXTRUSIONS ARE PROPRIETARY TO TUFF TRUCK BODIES, WITH T6061 ALUMINUM ALLOY USED AS STANDARD TO DELIVER 100% CORROSION RESISTANCE AND INCREASED STRENGTH, DURABILITY, AND LONGEVITY

FEATURES

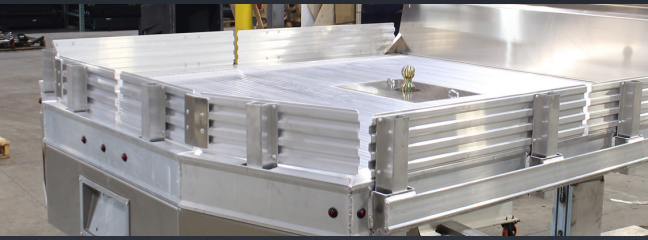
■ Exclusive to Tuff Truck

- All aluminum; no steel or hybrid
- 6" x 4" extruded rub rail, 3" x 3/8" tie rail with
- 2" x 4" stake pockets on 24" centers
- Boxed 1 3/4" extruded aluminum floor with smooth bottom
- Proprietary EX2 long sill rubber cushion insert
- 1/8" smooth aluminum chamfered rear apron with LED stop, tail, turn and backup lights
- Gooseneck hitch with 25,000-lb. ball
- 1/8" tapered bulkhead with screen window, 2"x3" extruded tube frame and integrated stop, tail, turn and backup lights
- Recessed cast aluminum compartment cover for gooseneck hitch or turnover ball
- LED marker light per FMVSS-108 standards

STANDARD RANCHERS

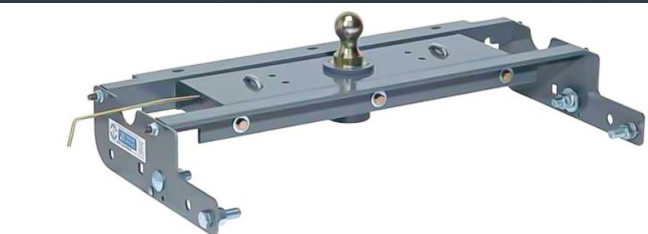
Model #	Dimensions	CA
AR07806	7'4" X 84"	42"
AR08806	8'6" X 84"	56"
AR08966	8'6" X 96"	56"
AR09966	9'4" X 96"	60"
AR11966	11'4" X 96"	84"

OPTIONS



DROP-IN SIDES

6 1/2 Extruded Drop-In Sides



HITCH OPTIONS

30,000-lb. gooseneck ball included, optional B&W turnover & fifth wheel companion hitches



REAR HITCH

Bolt-On Rear Hitch



TOOLBOXES

Custom sizes to fit any need

BENEFITS

■ Exclusive to Tuff Truck

- Superior quality and durability from fully welded aluminum compared to our competitors' lower quality welded versions
- Weight is further reduced by the crossmemberless design
- The underside doesn't collect road and job site debris because of the crossmemberless design
- Mounting height is reduced by 4", which means a lower center of gravity and installed bed height due to crossmemberless design
- Added frame protection plus reduced vibration and noise because of the proprietary EX2 long still rubber cushion insert
- Fast and easy installation with quick mount design
- Reduced fuel costs from bodies that weigh 50% less than steel



SKIRTED RANCHER

OUR ALL-ALUMINUM CONSTRUCTION WITH EXCLUSIVE CORROSION-RESISTANT EXTRUSIONS OUTPERFORMS THE COMPETITION TO DELIVER BETTER PERFORMANCE.



ALL EXTRUSIONS ARE PROPRIETARY TO TUFF TRUCK BODIES, WITH T6061 ALUMINUM ALLOY USED AS STANDARD TO DELIVER 100% CORROSION RESISTANCE AND INCREASED STRENGTH, DURABILITY, AND LONGEVITY

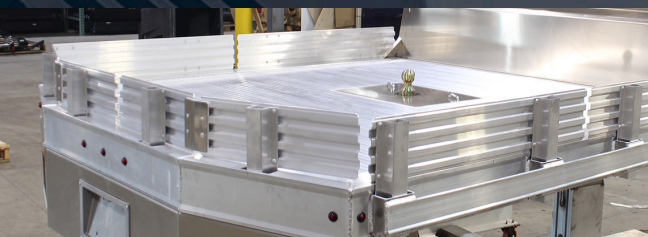
FEATURES

■ Exclusive to Tuff Truck

- All aluminum; no steel or hybrid
- 6" x 4" extruded rub rail, 3" x 3/8" tie rail with
- 2" x 4" stake pockets on 24" centers
- Boxed 1 3/4" extruded aluminum floor with smooth bottom
- Proprietary EX2 long sill rubber cushion insert
- 1/8" smooth aluminum chamfered rear apron with LED stop, tail, turn and backup lights
- Gooseneck hitch with 25,000-lb. ball
- 1/8" tapered bulkhead with screen window, 2"x3" extruded tube frame and integrated stop, tail, turn and backup lights
- Recessed cast aluminum compartment cover for gooseneck hitch or turnover ball
- LED marker light per FMVSS-108 standards

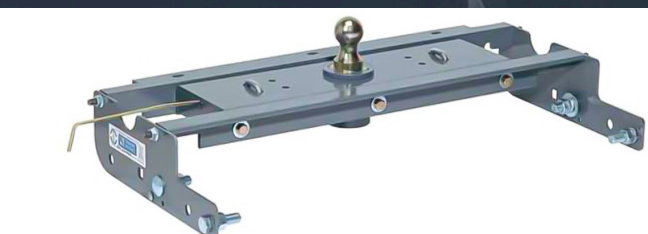


OPTIONS



DROP-IN SIDES

6 1/2 Extruded Drop-In Sides



HITCH OPTIONS

30,000-lb. gooseneck ball included, optional B&W turnover & fifth wheel companion hitches



REAR HITCH

Bolt-On Rear Hitch

BENEFITS

■ Exclusive to Tuff Truck

- Superior quality and durability from fully welded aluminum compared to our competitors' lower quality welded versions
- Weight is further reduced by the crossmemberless design
- The underside doesn't collect road and job site debris because of the crossmemberless design
- Mounting height is reduced by 4", which means a lower center of gravity and installed bed height due to crossmemberless design
- Added frame protection plus reduced vibration and noise because of the proprietary EX2 long still rubber cushion insert
- Fast and easy installation with quick mount design
- Reduced fuel costs from bodies that weigh 50% less than steel



SKIRTED RANCHERS

Model #	Dimensions	CA	Front Tool Box L x W x H	Rear Tool Box L x W x H
ARS07806	7'4" X 84"	42"	16" X 18" X 12"	18" X 18" X 12"
ARS08806	8'6" X 84"	56"	30" X 18" X 12"	18" X 18" X 12"
ARS091006	9'4" X 100"	60"	36" X 18" X 18"	24" X 18" X 18"
ARS111006	11'4" X 100"	84"	60" X 18" X 18"	24" X 18" X 18"

FDS RANCHER

OUR ALL-ALUMINUM CONSTRUCTION WITH EXCLUSIVE CORROSION-RESISTANT EXTRUSIONS OUTPERFORMS THE COMPETITION TO DELIVER BETTER PERFORMANCE.



ALL EXTRUSIONS ARE PROPRIETARY TO TUFF TRUCK BODIES, WITH T6061 ALUMINUM ALLOY USED AS STANDARD TO DELIVER 100% CORROSION RESISTANCE AND INCREASED STRENGTH, DURABILITY, AND LONGEVITY

FEATURES

■ Exclusive to Tuff Truck

- All aluminum; no steel or hybrid
- 6" x 4" extruded rub rail, 4" drop down sides with drop-in rear and recessed D-rings
- Boxed 1 3/4" extruded aluminum floor with smooth bottom
- Proprietary EX2 long sill rubber cushion insert
- 1/8" tread aluminum chamfered rear apron with LED stop, tail, turn and backup lights
- Gooseneck hitch with 25,000-lb. ball
- 1/8" tapered bulkhead with screen window, 2"x3" extruded tube frame and integrated stop, tail, turn and backup lights
- Recessed cast aluminum compartment cover for gooseneck hitch or turnover ball
- LED marker light per FMVSS-108 standards

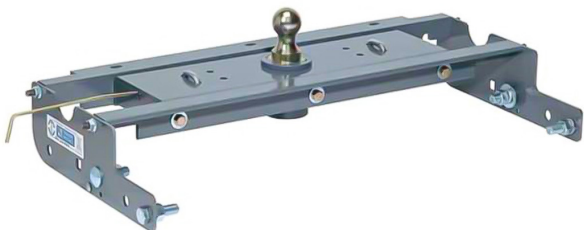


OPTIONS



TOOLBOXES

Custom sizes to fit any need



HITCH OPTIONS

30,000-lb. gooseneck ball included, optional B&W turnover & fifth wheel companion hitches



REAR HITCH

Bolt-On Rear Hitch

BENEFITS

■ Exclusive to Tuff Truck

- Superior quality and durability from fully welded aluminum compared to our competitors' lower quality welded versions
- Weight is further reduced by the crossmemberless design
- The underside doesn't collect road and job site debris because of the crossmemberless design
- Mounting height is reduced by 4", which means a lower center of gravity and installed bed height due to crossmemberless design
- Added frame protection plus reduced vibration and noise because of the proprietary EX2 long still rubber cushion insert
- Fast and easy installation with quick mount design
- Reduced fuel costs from bodies that weigh 50% less than steel



RANCHER FDS

Model #	Dimensions	CA
MAR07806	7'4" X 84"	42"
MAR08806	8'6" X 84"	56"
MAR08966	8'6" X 96"	56"
MAR09966	9'4" X 96"	60"
MAR11966	11'4" X 96"	84"

ECONOMY RANCHER

OUR ALL-ALUMINUM CONSTRUCTION WITH EXCLUSIVE CORROSION-RESISTANT EXTRUSIONS OUTPERFORMS THE COMPETITION TO DELIVER BETTER PERFORMANCE.



ALL EXTRUSIONS ARE PROPRIETARY TO TUFF TRUCK BODIES, WITH T6061 ALUMINUM ALLOY USED AS STANDARD TO DELIVER 100% CORROSION RESISTANCE AND INCREASED STRENGTH, DURABILITY, AND LONGEVITY

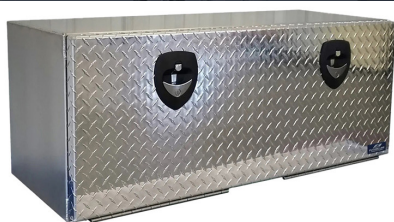
FEATURES

■ *Exclusive to Tuff Truck*

- All aluminum; no steel or hybrid
- Formed 1/8" rub rail, 3" x 3/8" tie rail with 2" x 4" stake pockets on 24" centers
- 1/8" floor with 4" extruded channel long & cross sills
- Exclusive EX2 long sill rubber cushion insert adds frame protection while reducing vibration and noise
- 1/8" smooth aluminum rear apron with LED stop, tail, turn and backup lights
- Gooseneck hitch with 25,000-lb. ball
- 1/8" tapered bulkhead with screen window, 2" x 2" extruded tube frame and integrated stop, tail, turn and backup lights
- LED marker light per FMVSS-108 standards

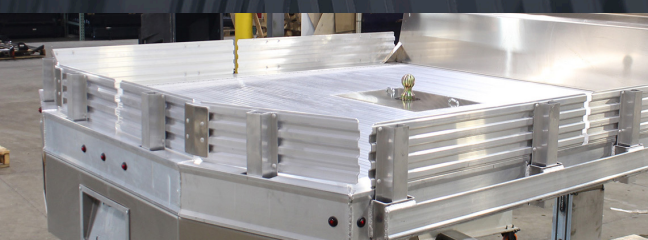


OPTIONS



TOOLBOXES

Custom sizes to fit any need



DROP-IN SIDES

6 1/2 Extruded Drop-In Sides



REAR HITCH

Bolt-On Rear Hitch

BENEFITS

■ Exclusive to Tuff Truck

- Superior quality and durability from fully welded aluminum
 - compared to our competitors' lower quality welded versions
- Fast and easy installation with quick mount design
- Reduced fuel costs from bodies that weigh 50% less than steel



ECONOMY RANCHERS

Model #	Dimensions	CA
AC007	7'4" X 84"	42"
AC008	8'6" X 84"	56"
AC009	9'4" X 100"	60"



PLATFORM BODY

Add a reliable, long-lasting truck platform to your vehicle from Tuff Truck Bodies. We're always innovating to provide you with the strongest, lightest and best truck equipment and products available on the market today.

PLATFORM BODY

OUR ALL-ALUMINUM CONSTRUCTION WITH EXCLUSIVE CORROSION-RESISTANT EXTRUSIONS OUTPERFORMS THE COMPETITION TO DELIVER BETTER PERFORMANCE.



ALL EXTRUSIONS ARE PROPRIETARY TO TUFF TRUCK BODIES, WITH T6061 ALUMINUM ALLOY USED AS STANDARD TO DELIVER 100% CORROSION RESISTANCE AND INCREASED STRENGTH, DURABILITY, AND LONGEVITY

FEATURES

■ Exclusive to Tuff Truck

- All aluminum; no steel or hybrid
- 8'6" to 26' body length and 80" and 96" body widths
- 6" x 4" extruded rub rail
- Flooring: treated pine, apitong, Rumber®, or 1 3/4" extruded aluminum floor with smooth bottom
- Proprietary EX2 long sill rubber cushion insert
- Light holes and LED lighting that meets FMVSS-108 requirements
- 2" x 4" internal stake pockets on 24" centers
- Built with 4" extruded aluminum crossmembers on 12" centers, versus 16", 18", or 24" centers standard on our competition



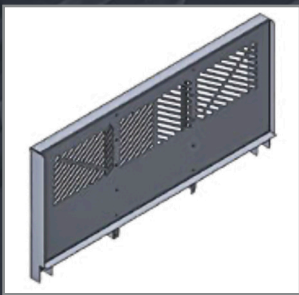
BENEFITS

▪ Exclusive to Tuff Truck

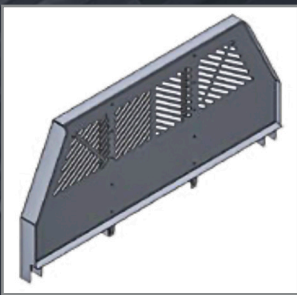
- Superior quality and durability from fully welded aluminum compared to our competitors' lower quality welded versions
- Lights are protected from impact and weather due to rubber mount
- Added frame protection plus reduced vibration and noise because of the proprietary EX2 long still rubber cushion insert
- Quick mount design for fast and easy installation
- Reduced fuel costs from bodies that weigh 50% less than steel



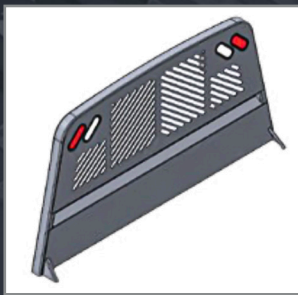
STAKE BODY BULKHEADS



STRAIGHT
BULKHEAD



TAPERED
BULKHEAD



RANCHER
BULKHEAD



UNDERBODY
WITH EX2

Slotted bulkhead design increases visibility by up to 35%

STANDARD-DUTY STAKE BODIES

Dimensions	Wood	1 3/4" Extruded Aluminum (with Traction)	1 3/4" Extruded Aluminum (smooth)	Apitong
8'6" X 80"	AW0880612	AE0880600	AS0880600	AA0880612
9'4" X 96"	AW0996612	AE0996600	AS0996600	AA0996612
11'4" X 96"	AW1196612	AE1196600	AS1196600	AA1196612
12'4" X 96"	AW1296612	AE1296600	AS1296600	AA1296612
14'4" X 96"	AW1496612	AE1496612	AS1496612	AA1496612
16'4" X 96"	AW1696612	AE1696612	AS1696612	AA1696612
18'4" X 96"	AW1896812	AE1896812	AS1896812	AA1896812
20'4" X 96"	AW2096812	AE2096812	AS2096812	AA2096812
22'4" X 96"	AW2296812	AE2296812	AS2296812	AA2296812
24'4" X 96"	AW2496812	AE2496812	AS2496812	AA2496812
26'4" X 96"	AW2696812	AE2696812	AS2696812	AA2696812



LANDSCAPER BODY

Tuff Truck Bodies designs high-quality landscaper truck bodies with removable sides, perfect for customers who plow snow in the winter or need a flatbed. Built in our state-of-the-art facility, they feature CNC machining, robotic welding, and premium materials with durable electrical connections.

LANDSCAPER BODY

OUR ALL-ALUMINUM CONSTRUCTION WITH EXCLUSIVE CORROSION-RESISTANT EXTRUSIONS OUTPERFORMS THE COMPETITION TO DELIVER BETTER PERFORMANCE.



ALL EXTRUSIONS ARE PROPRIETARY TO TUFF TRUCK BODIES, WITH T6061 ALUMINUM ALLOY USED AS STANDARD TO DELIVER 100% CORROSION RESISTANCE AND INCREASED STRENGTH, DURABILITY, AND LONGEVITY

FEATURES

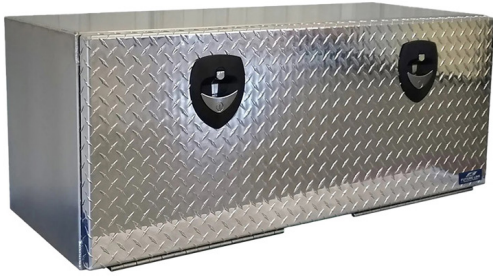
■ Exclusive to Tuff Truck

- All aluminum; no steel or hybrid
- 9'4" or 12'4" standard body length
- 42" tall sides, front and rear 1/8"
- 6" x 4" extruded rub rail and 4" x 4" x 1/4" extruded top rail
- Boxed 1 3/4" extruded aluminum floor with smooth bottom
- Proprietary EX2 long still rubber cushion insert
- Crossmemberless
- Single-latch doors
- Two-piece cargo doors are easy to open with no top obstruction
- Stainless steel hardware and aluminum hinges
- LED lights with one-piece wiring harness
- Passenger side 50" side door standard

LANDSCAPE BODY

Model #	Dimensions	CA
MLB099642	9'4" X 96"	60"
MLB129642	12'4" X 96"	84"

OPTIONS



TOOLBOXES

Custom sizes to fit any need



REAR HITCH

Bolt-On Rear Hitch



BENEFITS

■ Exclusive to Tuff Truck

- Superior quality and durability from fully welded aluminum compared to our competitors' lower quality welded versions
- Weight is further reduced by the crossmemberless design
- The underside doesn't collect road and job site debris because of the crossmemberless design
- Mounting height is reduced by 4", which means a lower center of gravity and installed bed height due to crossmemberless design
- Added frame protection plus reduced vibration and noise because of the proprietary EX2 long sill rubber cushion insert
- Removable front, sides and rear is great for snow removal companies
- Reduced fuel costs from bodies that weigh 50% less than steel





CONTRACTOR BODY

The Tuff Truck Contractor Body offers unmatched durability and performance with its all-aluminum, corrosion-resistant construction. Designed for efficiency, it reduces weight and enhances stability, making it the perfect solution for demanding work environments.

CONTRACTOR BODY

OUR ALL-ALUMINUM CONSTRUCTION WITH EXCLUSIVE CORROSION-RESISTANT EXTRUSIONS OUTPERFORMS THE COMPETITION TO DELIVER BETTER PERFORMANCE.



ALL EXTRUSIONS ARE PROPRIETARY TO TUFF TRUCK BODIES, WITH T6061 ALUMINUM ALLOY USED AS STANDARD TO DELIVER 100% CORROSION RESISTANCE AND INCREASED STRENGTH, DURABILITY, AND LONGEVITY

FEATURES

■ Exclusive to Tuff Truck

- All aluminum; no steel or hybrid
- 6" x 4" extruded rub rail, 4" x 4" x 1/4" extruded top rail
- Boxed 1 3/4" extruded aluminum floor with smooth bottom
- Proprietary EX2 long sill rubber cushion insert
- 1/8" smooth aluminum apron with LED stop, tail, turn and backup lights
- 2" x 4" ladder rack with swing out rear bar
- 2" x 2" goal posts
- 16" fold down sides
- Louvered bulkhead with 4 backup lights
- Toolboxes used a compression style latch with automotive bulb seal
- LED marker light per FMVSS-108 standards



OPTIONS



REAR HITCH
Bolt-On Rear Hitch



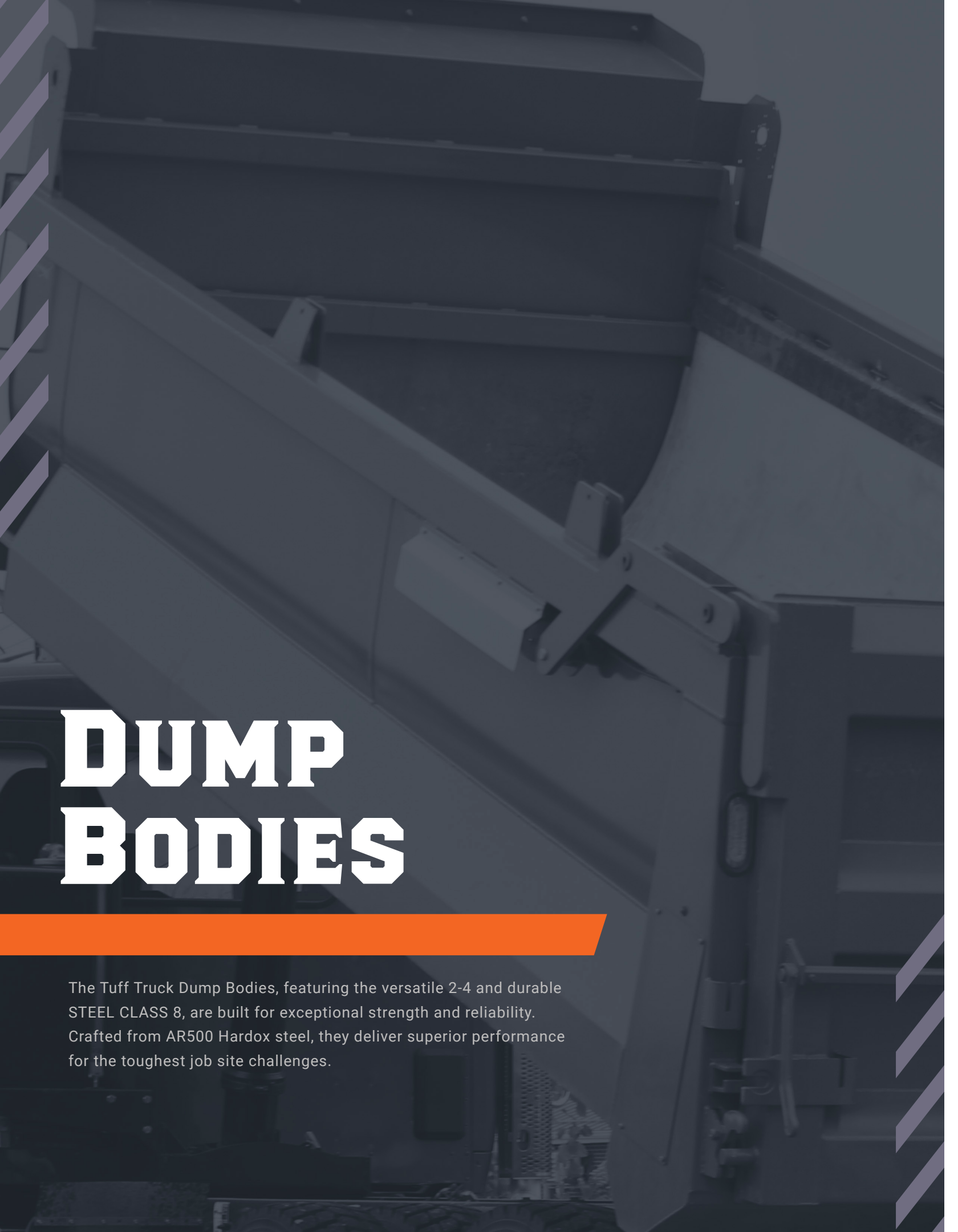
BENEFITS

■ *Exclusive to Tuff Truck*

- Superior quality and durability from fully welded aluminum compared to our competitors' lower quality welded versions
- Weight is further reduced by the crossmemberless design
- The underside doesn't collect road and job site debris because of the crossmemberless design
- Mounting height is reduced by 4", which means a lower center of gravity and installed bed height due to crossmemberless design
- Added frame protection plus reduced vibration and noise because of the proprietary EX2 long still rubber cushion insert
- Fast and easy installation with quick mount design
- Reduced fuel costs from bodies that weigh 50% less than steel

CONTRACTOR BODIES

Model #	Length	2 Top Tool Boxes LxHxD	2 Bottom Tool Boxes LxHxD
MCB0996600	9'4"	48" X 18" X 18"	30" X 18" X 18"
MCB1296600	12'4"	48" X 18" X 18"	36" X 18" X 18"



DUMP BODIES

The Tuff Truck Dump Bodies, featuring the versatile 2-4 and durable STEEL CLASS 8, are built for exceptional strength and reliability. Crafted from AR500 Hardox steel, they deliver superior performance for the toughest job site challenges.

2-4 & 3-4 YARD DUMP BODY

OUR ALL-ALUMINUM CONSTRUCTION WITH EXCLUSIVE CORROSION-RESISTANT EXTRUSIONS OUTPERFORMS THE COMPETITION TO DELIVER BETTER PERFORMANCE.



ALL EXTRUSIONS ARE PROPRIETARY TO TUFF TRUCK BODIES, WITH T6061 ALUMINUM ALLOY USED AS STANDARD TO DELIVER 100% CORROSION RESISTANCE AND INCREASED STRENGTH, DURABILITY, AND LONGEVITY

FEATURES

■ *Exclusive to Tuff Truck*

- All aluminum; no steel or hybrid
- Boxed 1 3/4 extruded aluminum floor with smooth bottom
- Proprietary EX2 long sill rubber cushion insert
- 1/8" aluminum alloy sides
- 1/8" double-walled tailgate with 12V electric tailgate release
- Double-acting and quick release tailgate
- 1/4 cab
- Fold-down sides



OPTIONS



HOIST OPTIONS



COAL CHUTE OPTION

BENEFITS

▪ Exclusive to Tuff Truck

- Superior quality and durability from fully welded aluminum compared to our competitors' lower quality welded versions
- Weight is further reduced by the crossmemberless design
- The underside doesn't collect road and job site debris because of the crossmemberless design
- Added frame protection plus reduced vibration and noise because of the proprietary EX2 long still rubber cushion insert
- Electric tailgate release provides convenience and safety
- Reduced fuel costs from bodies that weigh 50% less than steel

2-3 YARD DUMP BODIES

12" Sides & 24" Tailgate

Model #	Dimensions
AMM0996612	9'4" X 96"
AMM1196612	11'4" X 96"

3-4 YARD DUMP BODIES

16" Sides & 24" Tailgate

Model #	Dimensions
AMM0996616	9'4" X 96"
AMM1196616	11'4" X 96"

STEEL DUMP BODY



WEIGHT IS 20% LESS THAN AR450 3/16" BODIES WITH THE SAME STRENGTH

TUFF CLASS 8 DUMP BODIES ARE MADE OF STEEL, STRONG, AND MEANT TO LAST

- Elliptical Dump Body
- Trunnion Mounts Hoist
- Hardox 500 Tuf front, tub, and tailgate
- 10 ga. fenders with step
- 1/4" x 2" x 8" long sills, 1/4" x 4" x 4" crossmembers, and 4" x 6" top rail
- Sand-blasted, zinc-coated, and powder-coated to your specifications
- Dual air cylinder tailgate latches
- 1-piece wire harness with Deutsch connectors
- 5-in-1 tail light (stop, turn, tail, reverse, strobe)

**1 YEAR
WARRANTY**

TS AVENGER

Body Length	15'-21'
Side Height	48"-60"
Tailgate Height	54"-66"
Tailgate Panels	2-4-6
Highlift Tailgate	Optional
Sloping Tailgate	Optional
Internal Doghouse	Optional
Material Options	4 mm 500 Tuf 3/16" 500 Tuf
Approx. Weight (17.5 Shown)	4mm 4,250 lbs. vs 3/16" AR 450 5150 lbs. (body weight) 3/16" 5,150 lbs. vs 1/4" AR 450 6140 lbs. (body weight)



SERVICE BODIES

The FL Series service body from Tuff Truck revolutionizes work efficiency with its robust all-aluminum construction and innovative design features. Engineered for maximum durability and functionality, it's the ultimate solution for professionals seeking reliability on the job.

FL SERIES SERVICE BODY

OUR ALL-ALUMINUM CONSTRUCTION WITH EXCLUSIVE CORROSION-RESISTANT EXTRUSIONS OUTPERFORMS THE COMPETITION TO DELIVER BETTER PERFORMANCE.



ALL EXTRUSIONS ARE PROPRIETARY TO TUFF TRUCK BODIES, WITH T6061 ALUMINUM ALLOY USED AS STANDARD TO DELIVER 100% CORROSION RESISTANCE AND INCREASED STRENGTH, DURABILITY, AND LONGEVITY

At Tuff Truck Bodies, our new FL Series service body sets a new standard in innovation, offering customers unparalleled strengths and durability with the added convenience of easy repairs when needed. Each individual compartment is meticulously crafted with a fully welded design, featuring double panel doors, piano hinges, and Vector Compression Latches for ultimate security and functionality. Experience the next level of service bodies with Tuff Truck Bodies and redefine your expectations for quality and reliability.

OPTIONS

- Flip Top Compartment
- Aluminum Over the Cab Ladder Rack
- Headache Rack
- Lighted Compartments
- Slam Latches
- Electronic Latches
- D-Ring Tie Downs on Cargo Floor





HOIST BODIES

A Tuff Truck hoist is the perfect addition to any truck. Built to lift the heaviest of materials, the hoist can take a lot of work off your workers, keeping them safe and getting the work done quicker.

HOIST BODIES



TUFF SUBFRAME HOISTS ARE STRONG, MEANT TO LAST, AND EASY TO INSTALL

The rear hinge and body prop are preinstalled. Subframes are available in 60" CA and 84" CA chassis (subframe extensions are only 11'). Standard with Tuff hoists is an electric double acting pump.



Body Length	8'-11'
NTEA Class	D/40
# of Cylinders	1
Bore	5 1/2"
Stroke	16"
Rod Diameter	2"
Mounting Height	5"
Recommended CA/CT	60"-84" CA
Capacity Range	6T-8T
Approx. Weight (w/o oil)	450 lbs

OUR MISSION

For hardworking professionals who need tough solutions, Tuff Truck Bodies delivers innovative, customized equipment engineered to solve problems and built to conquer. With Midwest values and a legacy of craftsmanship, we provide durable, precision-engineered truck bodies that save time, cut costs, and streamline operations.



**Scan the QR Code
To Visit Our Site**



*3-YEAR WARRANTY NOT APPLICABLE TO STEEL CLASS-8 BODY MODEL

550 60TH AVE. SW, CEDAR RAPIDS, IOWA 52404

CALL: (319) 730-3800

TUFFTRUCKBODIES.COM